



SafeBlue Imager System

SafeBlue Imager System

MBE-IMG series

The SafeBlue Imager System offers three selections for your convenience and preference. The compact digital camera allows you to take pictures from the camera and stores in the memory card without any hassle. The portable and light design allows you to carry it with ease. The 5 MP scientific grade camera provides an excellent image to your laptop through the USB connection whereas the digital camera type offers computer free operation. The darkroom viewer provides a darkroom environment for you to view the migrating DNA with ease. The SafeBlue Imager System completes the SafeBlue electrophoresis series for all your needs - from gel casting, gel electrophoresis to gel documentation; all in one system. The complete SafeBlue Imager System not only saves your lab bench space, but also provides excellent portability to move from lab to lab.

PC Requirement:

- Processor: 1.8 GHz Pentium® IV or equivalent AMD Athlon® processor
- Memory: 512 MB required
- Storage: 1 GB
- Media: CD-ROM drive
- Connectivity: 1 port USB 2.0
- Video: 1280 x 800 resolutions
- Operating System: Windows® 7 SP1/ Windows® Vista SP1 / Windows® XP SP3
- Printer: USB printer or thermal printer (optional)



Easy handling and set up for gel imaging

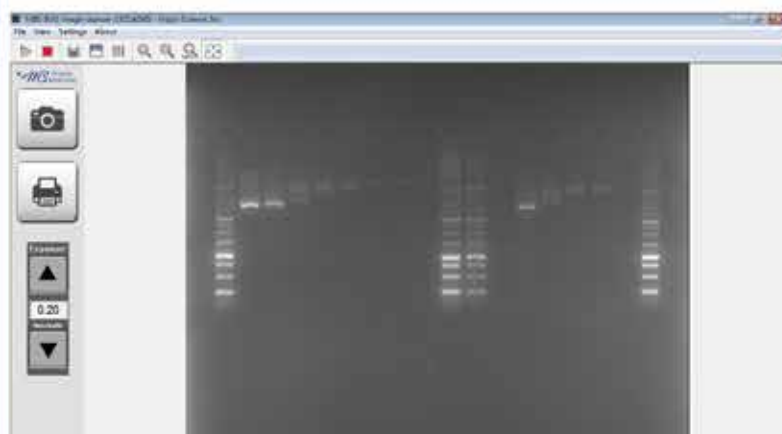
Features

- Light weight and space saving design
- Ready to use out of the box; just connect and capture
- Two camera types available: choose digital camera or scientific grade camera
- Designed for SafeBlue electrophoresis system to complete cast, run, and capture
- Gel analysis software also included for FREE. (Only applies to scientific grade camera model)
- PC free for digital camera model. PC required for scientific camera model.



MBE-IMG-CA

MBE-IMG-CM



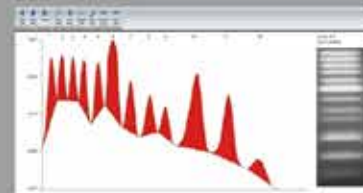
MS 1D Analysis Software(Cat. No. MBE-IMG-SW)

PC Version

Load image



Quantify



Define region



Analysis



PC is not included

Specification



SafeBlue Imager System 210 Digital Camera	
Type	5 x optical / 4 x digital zoom digital camera with built-in Wi-Fi
Effective Pixels	Approx. 12.1 megapixels
CCD	1/1.7" high-density CCD; total pixels 15.0 million
Maximum Aperture	f/1.8 (W) - f/2.8 (T)
Shutter Speed	15 - 1/4000 sec.
Filters	Amber filter
Storage Media	SD memory card
Computer Interface	USB 2.0 Hi-speed (mini-B jack) or Wi-Fi connection
Video Out	NTSC / PAL

SafeBlue Imager System 220 Scientific Grade Camera	
Resolution	2592 x 1944 pixels
Pixel Density	10 bit
FPS (Frame Per Second)	5 frames
Sensitivity	1.4 V / lux-sec
File Format	BMP, JPEG, TIFF, PNG
Exposure Range	30 - 0.01 sec.
Focal Length	6 mm
Maximum Relative Aperture	F1.2



MBE-IMG-CA-01



MBE-IMG-CA-02



MBE-IMG-CM-01



MBE-IMG-CM-02



MBE-IMG-CM-03



MBE-IMG-F1



MBE-IMG-G-Y1



DI-LA

SafeBlue Imager System Dark Room	
Camera Holder Material	POM (Polyoxymethylene)
Darkroom Material	ABS (Acrylonitrile Butadiene Styrene)
Darkroom Dimension	(W x L x H) 13.9" x 7.68" x 15.75" (340 x 195 x 400 mm)
Amber Filter	560 nm
Unit Weight	Approx. 1.8 lb (0.8 kg), including a camera

Ordering Information

Cat. No.	Product Description
MBE-IMG-CA	SafeBlue 210 Imager System with 12.1 megapixel digital camera and hood kit
MBE-IMG-CM	SafeBlue 220 Imager System with 5.0 megapixel scientific grade camera and hood kit
MBE-150-01	SafeBlue Imager System, dark room viewer
MBE-IMG-CA-01	SafeBlue 210 Hood Kit, includes camera adapter, amber filter, and hood
MBE-IMG-CA-02	SafeBlue 210 Holder Kit, includes camera adapter and amber filter
MBE-IMG-CM-01	SafeBlue 220 Hood Kit, includes camera adapter, amber filter, and hood
MBE-IMG-CM-02	SafeBlue 220 Holder Kit, includes camera adapter and amber filter
MBE-IMG-CM-03	5.0 megapixel scientific grade camera, lens and USB cable
MBE-IMG-F1	SafeBlue amber filter
MBE-G-Y1	Amber filter viewing glasses
DI-LA	Lens adapter for digital camera
MBE-IMG-F3	SafeBlue amber filter
MBE-IMG-F4	SafeBlue amber filter

Bundle Packages

Cat. No.	Product Description
MBE-CP-01	SafeBlue electrophoresis system complete set with 210 Imager system
MBE-CP-02	SafeBlue electrophoresis system complete set with 220 Imager system

*For more information please refer to SafeBlue Illuminator System



MBE-150+-01



MBE-CP-01



MBE-CP-02



www.majorsci.com

info@majorsci.com

US Office

19959 Sea Gull Way
Saratoga, CA 95070
U.S.A.
T/ +1-408-366-9866
F/ +1-408-446-1107

Taiwan Office

No.37, Wuquan 5th Road,
Wugu Dist., New Taipei City 24888
Taiwan
T/ +886-2-2298-1055
F/ +886-2-2299-7871

India Office

No.12-13-104, St. No.3, Lane No.1,
Tarnaka, Secunderabad - 500 017
Andhra Pradesh, India
T / +91- 40-27001586
F / +91- 40-27001586