



# Stirring Water Bath

# 10L/ 20L Stirring Water Bath

## SWB series

The MS Stirring Water Bath series packs with built-in thermostatic baths is an innovative product line to provide precise temperature control and excellent mixing performance for a wide range of laboratory applications. The built-in stirring mechanism not only provides outstanding temperature uniformity, but also applies a stirring mixture function. The 10 L or 20 L stainless steel tank can operate flask(s) containing a moderate amount of solution simultaneously. Two single stirring mechanism models and two multi-stirring models are available for your preference.



Built-in magnetic stirring mechanism

### Features

- Microprocessor control with digital performance for precise, accurate control
- Built-in magnetic stirring mechanism for water agitation, water temperature uniformity and medium solution mixing
- Stirring speed control
- LCD screen shows temperature and timer simultaneously
- User temperature calibration
- Safety device: warning indication on screen to avoid overheating and automatic shut down
- Multiple stirring mechanism capability
- Data Logging software available

SWB-10L



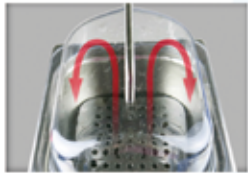
Max. Capability: 6 sets of 250 ml flasks  
4 sets of 500 ml flasks

SWB-20L



Max. Capability: 15 sets of 250 ml flasks  
8 sets of 500 ml flasks

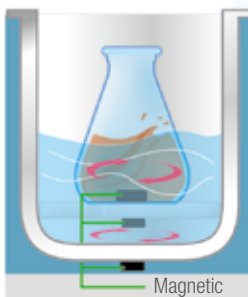
CE



Concave lid design to allow condensation flow back to the tank.



Side opening of the lid to allow minimum evaporation while maintaining water bath temperature.



Water Circulation Function

## Specifications

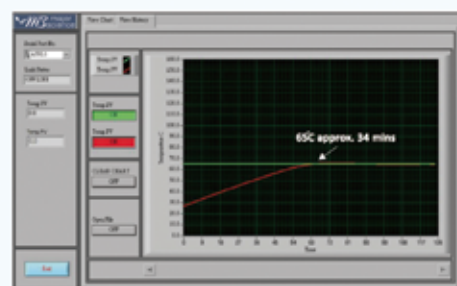
Product name	SWB-10L-1	SWB-10L-2	SWB-20L-1	SWB-20L-3
Number Of Stirring Mechanisms	1	2	1	3
Stirring Speed	400~1500 rpm (measured by percentage)			
Bath Capacity	approx. 2.64 gal (10 L)		approx. 5.28 gal (20 L)	
Water Circulation Function	Yes			
Display	LCD			
Heating Power	600 W		800 W	
Controller	Digital microprocessor controller			
Bath Temperature	5 °C above ambient to 99 °C			
Temperature Increment	0.1°C			
Temperature Accuracy	+/- 0.2 °C at 37 °C			
Temperature Calibration	Yes			
Timer	Up to 99 (hr) : 59 (min), continuous			
Safety Device	Warning indication on screen with alarm and automatic shut down			
Operating Temperature	Ambient to 40 °C			
Bath Tank Material	304 stainless steel			
Bath Inner Dimension (W x L x H)	9.45" x 11.81" x 5.91" (240 x 300 x 150 mm)		11.81" x 19.69" x 5.91" (300 x 500 x 150 mm)	
Unit Dimension (W x L x H)	10.04" x 13.98" x 9.45" (255 x 355 x 240 mm) (without lid)		12.99" x 21.26" x 9.45" (330 x 540 x 240 mm) (without lid)	
Drainage Port On The Rear	N / A		Yes	
Construction	Painted iron metal			
Lid Material	Polycarbonate with stainless steel handle			
Communication Port	RS232			
Weight	Approx. 19.8 lb (9 kg)		Approx. 30.9 lb (14 kg)	
Rated Voltage	110 V or 220 V			

## Ordering Information

Cat. No.	Product Description
SWB-10L-1-110 / 220	10 L Stirring Water Bath with 1 built-in stirring mechanism, lid included
SWB-10L-2-110 / 220	10 L Stirring Water Bath with 2 built-in stirring mechanism, lid included
SWB-20L-1-110 / 220	20 L Stirring Water Bath with 1 built-in stirring mechanism, lid included
SWB-20L-3-110 / 220	20 L Stirring Water Bath with 3 built-in stirring mechanism, lid included

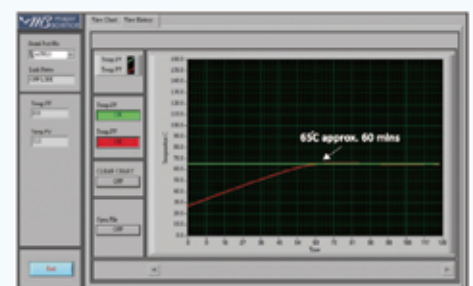
## Accessories

Cat. No.	Product Description
SWB-LID10	Transparent lid for 10 L stirring water bath
SWB-LID20	Transparent lid for 20 L stirring water bath
SWB-RS232	RS 232 cable for data logging
SWB-DLSW	Data Logging software package
SWB-DLSW-R	Data Logging software package, include a RS 232 cable



### SWB-10L Series

■ Temp. Set Value : 65 °C  
■ Initial Temp. Value : 17 °C  
 Water Volume : 5 liters  
 Process Time : approx. 34 mins



### SWB-20L Series

■ Temp. Set Value : 65 °C  
■ Initial Temp. Value : 27 °C  
 Water Volume : 12 liters  
 Process Time : approx. 60 mins



[www.majorsci.com](http://www.majorsci.com)

[info@majorsci.com](mailto:info@majorsci.com)

#### **US Office**

19959 Sea Gull Way  
Saratoga, CA 95070  
U.S.A.  
T/ +1-408-366-9866  
F/ +1-408-446-1107

#### **Taiwan Office**

No.37, Wuquan 5<sup>th</sup> Road,  
Wugu Dist., New Taipei City 24888  
Taiwan  
T/ +886-2-2298-1055  
F/ +886-2-2299-7871

#### **India Office**

No.12-13-104, St. No.3, Lane No.1,  
Tarnaka, Secunderabad - 500 017  
Andhra Pradesh, India  
T / +91- 40-27001586  
F / +91- 40-27001586