



Ultimate Dry Bath Incubator

Ultimate Dry Bath Incubator

MC-01 series

Two models of Ultimate Dry Bath Incubator are available with different heating and cooling profiles, along with a competitive selection of interchangeable blocks. Both modules are designed for a variety of applications including ligation, storage, restriction digest, denaturing DNA, BUN, melting agar, coagulation studies, hybridization and Hot Start thermo-cycled reaction. Control options include Constant Operation, Programmable Mode, and Annealing Mode. Ultimate dry bath has a 2.6" LCD screen, showing all the running / setting conditions. The microprocessor controller offers easy temperature selection, as well as rapid heat up and cooling down with excellent stability. The temperature can be set in 0.1°C increments, from -10°C to 100°C. Optional function control software is available for real time data recording through a PC.



Can be used as a water bath

Features

- Microprocessor control with digital performance for precise, accurate control
- Wide temperature control range & great temperature controlled performance
- Rapid temperature increasing rate
- LCD screen shows all the parameters during run
- User temperature calibration
- Used as a water bath
- Function Control software available



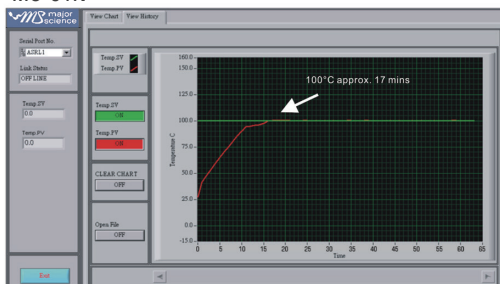
MC-01N



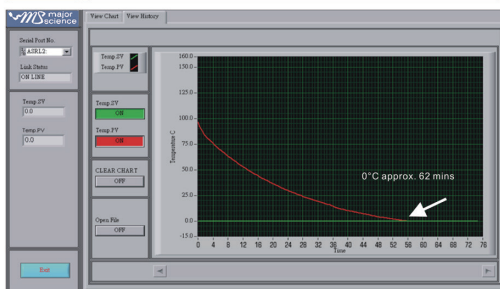
MC-01S



MC-01N

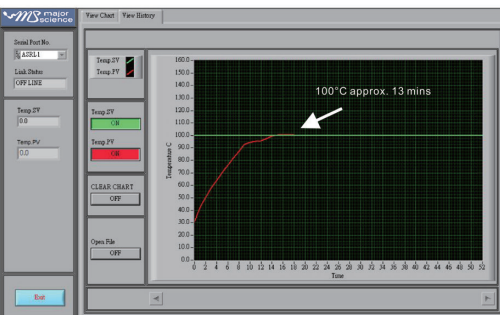


■ Temp. Set Value: 100°C
■ Initial Temp. Value: 25°C
Block Model: MD-B0.2+0.5
Process Time: Approx. 17 mins

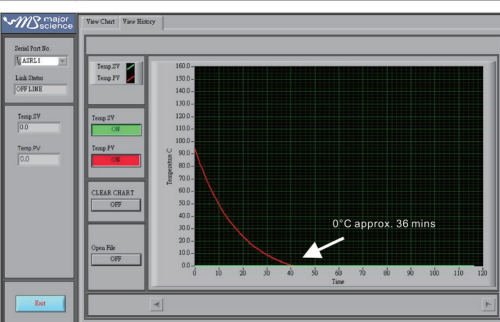


■ Temp. Set Value: 0°C
■ Initial Temp. Value: 100°C
Block Model: MD-B0.2+0.5
Process Time: Approx. 62 mins

MC-01S



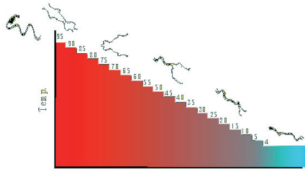
■ Temp. Set Value: 100°C
■ Initial Temp. Value: 28°C
Block Model: MD-BS0.2+0.5
Process Time: Approx. 13 mins



■ Temp. Set Value: 0°C
■ Initial Temp. Value: 100°C
Block Model: MD-BS0.2+0.5
Process Time: Approx. 36 mins

Accessories

Cat. No.	Product Description
MC-B0.5H	(1/2) Half Block for 0.5 ml tube, 15 wells One Ultimate Dry Bath Incubator can insert 2 ea of Half Block
MC-B1.5H	(1/2) Half Block for 1.5 or 2 ml tube, 15 wells One Ultimate Dry Bath Incubator can insert 2 ea of Half Block
MC-BS0.2+0.5	Combination: 0.2 ml tube, 36 wells; 0.5 ml, 20 wells
MC-BS0.5+1.5	Combination: 0.5 ml tube, 18 wells; 1.5 ml, 14 wells



Annealing Program

Initial Temp.	95.0
Descending Time.	5.0
Holding Time.	5
Final Temp.	4.0

Specifications

Cat. No.	MC-01N	MC-01S
Chamber Dimension (W x L x H)	4.92"x3.54"x1.97"(125x90x50mm)	4.92"x3.54"x 0.75"(125x90x19mm)
Display	2.6" LCD	
Heating Power	400 W	
Unit Dimension	(W x L x H) 7.87" x 11.61" x 5.51" (200 x 295 x 140 mm)	
Controller	Digital Microprocessor Controller	
Heating Chamber	Water-proof aluminum	
Temperature Control Range	30°C below ambient temperature (minimum -10°C) to 100°C	
Temperature Increment	0.1°C	
Temperature Uniformity at 37°C	± 0.2°C	
Temperature Accuracy at 37°C	± 0.2°C	
Temperature Calibration	Yes	
Operation Mode	Constant operation: constant temperature (-10-100°C); Timer: 1-9999 mins	
	Program operation: 1-4 steps and up to 9 cycles; timer: 1-9999 mins	
	Annealing program	
Safety Device	Leak proof heating chamber	
Operating Temperature	Ambient to 40°C	
Special Feature	Can be used as water bath incubator	
Block Material	Aluminum alloy	
Block Type	Standard and customized type are available	
Data Log	RS232	
Rated Voltage	110 V or 220 V	
Unit Weight	Approx. 17.6 lb (8 kg)	
Blocks	Ultimate MC Block	Ultimate plus MC Block
Dimension (W x L x H)	3.54"x 5.08"x 1.81"(90x129x46mm)	3.54"x 5.08"x 1.18"(90x129x30mm)
Block Material	Aluminum alloy	
Block Lifter Well	Yes	
Thermometer Well	Yes (except microplate blocks)	

Ordering Information

Cat. No.	Product Description
MC-01N-110/220	Ultimate Dry Bath Incubator;without block
MC-01S-110/220	Ultimate plus Dry Bath Incubator;without block
MD-RS232	RS 232 cable
MD-PCSW	Function control software package
MD-PCSW-R	Function control software package; including a RS232 cable

Accessories

Cat. No.	Product Description
MC-MP01	For microplate; Titerplate (Plain Block)
MC-MP02	For 96 wells deep Microplate or PCR plate
MC-B0.5	For 0.5 ml, 30 wells
MC-B1.5	For 1.5 or 2.0 ml, 30 wells
MC-B0.5+1.5	Combination: for 1.5 ml or 2.0 ml tube, 15 wells and 0.5 ml tube, 15 wells (on the same side)
MC-B0.2+0.5+1.5	Combination: 0.2 ml tube (or strip tube for 8 wells), 24 wells; 1.5 ml or 2.0 ml tube, 10 wells and 0.5 ml tube, 10 wells (on the same side)
MC-B13	Well size 13 mm, 30 wells
MC-B17	For 15 ml centrifuge tube, 15 wells
MC-B20	Well size 20 mm, 15 wells
MC-B25	Well size 25 mm, 6 wells
MC-B29	For 50 ml centrifuge tube, 6 wells
MC-B0.2H	(1/2) Half Block for 0.2 ml tube, 40 wells (or 0.2 ml PCR Strip tube for 8 well x 5)
	One Ultimate Dry Bath Incubator can insert 2 ea of Half Block

For more information please refer to 16-19



www.majorsci.com

info@majorsci.com

US Office

19959 Sea Gull Way
Saratoga, CA 95070
U.S.A.
T/ +1-408-366-9866
F/ +1-408-446-1107

Taiwan Office

No.37, Wuquan 5th Road,
Wugu Dist., New Taipei City 24888
Taiwan
T/ +886-2-2298-1055
F/ +886-2-2299-7871

India Office

No.12-13-104, St. No.3, Lane No.1,
Tarnaka, Secunderabad - 500 017
Andhra Pradesh, India
T / +91- 40-27001586
F / +91- 40-27001586