



## **Mini Cooler**

NEW

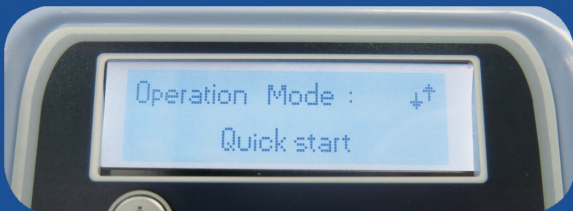
# Mini Cooler

## MC-02 series

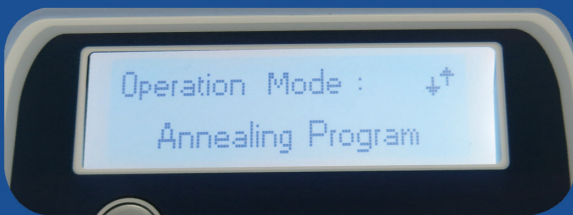
The first of mini thermoblock product line, mini dry bath is finally here. It is compact in design yet powerful enough to fit all your incubating needs. Whether you need to incubate your PCR strips or use it as a water bath, the MD-MINI is up to the task. The molded PTFE coated chamber also allows you to use it as a water bath. The interchangeable ability of the heating block brings you the convenience of a traditional dry bath.



Can be used as a bead bath



Quick start program



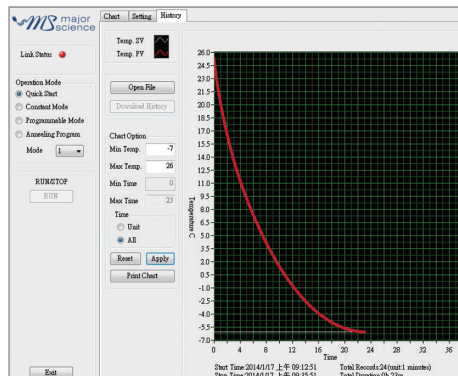
Annealing program

### Features

- Small size, fits in your palm
- User temperature calibration
- Single molded chamber, no cracks or welds
- PTFE coated chamber resists stains
- Can be used as a mini water bath or bead bath
- Outstanding heating rate
- Different sizes of heating block available for selection
- Clear cover to ensure temperature uniformity
- Quick start program (only MC-0203)
- Annealing program (only MC-0203)
- Optional car adaptor provides portability on the road

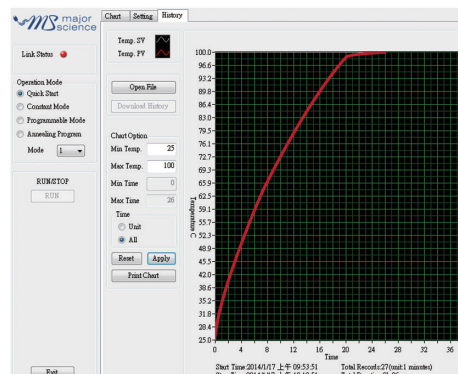


MC-02 series



### MC-0201/ MC-0203

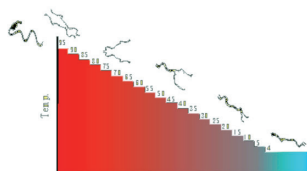
- Temperature control range: 30°C below ambient (min: -10°C)
- Temp. Increment / Decrement: 0.1°C
- Cooling Rate: Max. 4°C/ min
- Block type: Standard (MD-mini) / customized upon request



### MC-0203

- Temperature control range: 30°C below ambient to 100°C (min: -10°C)
- Temp. Increment / Decrement: 0.1°C
- Heating Rate: Max. 5°C/ min
- Cooling Rate: Max. 4°C/ min
- Block type: Standard (MD-mini) / customized upon request





## Annealing Program

Initial Temp.	95.0
Descending Time.	5.0
Holding Time.	5
Final Temp.	4.0



As a water bath

## Specifications

Cat. No.	MC-0201	MC-0203
Display	LCD	
Power	40 W	60 W
Unit Dimension	(W x L x H) 7.28" x 5.98" x 5.28" (185 x 152 x 134 mm) (excluding lid)	
Controller	High performance 32 bits microprocessor	
Heating /Cooling Chamber	Molded water-proof aluminum alloy coated with PTFE	
Temp Control Range	30°C below ambient temperature (minimum -10°C)	30°C below ambient temperature (minimum -10°C) to 100°C
Temp Increment/Decrement	0.1°C	
Temp Uniformity	± 0.2°C at 37°C	
Temp Accuracy	± 0.25°C at 37°C	
Temp Calibration	Yes	
Cooling/ Heating Rate	Max. 5.5°C / 6°C per min	
Cooling/ Heating Parts	Peltier	Peltier / Heating element
Operation Mode	Constant operation: constant temperature (-10-20°C); Timer:1-9999 mins	Constant operation: constant temperature (-10-100°C); Timer:1-9999 mins
	N / A	Program operation: 1-4 steps and up to 9 cycles; timer: 1-9999 mins
	N / A	Annealing program
	N / A	Quick start program: 4°C, 16°C, 37°C, 56°C, 95°C pre-set
Safety Device	Leak proof heating chamber	
Operating Temperature	Ambient to 40°C	
Special Feature	Can be used as water bath incubator	
Block Material	Aluminum alloy	
Block Type	Standard and customized type are available	
Data Log	USB	
Unit Weight	Approx. 2.9 lb (1.3 kg)	

## Ordering Information

Cat. No.	Product Description
MC-0201	Mini Cooling Dry Bath Incubator, 200 series, cooling only, without block
MC-0203	Mini Cooling Dry Bath Incubator, 200 series, programmable cooling and heating; without block

## Accessories

Cat. No.	Product Description
MC-0200-SW	Functional control software for Mini cooling incubator series, including a USB cable
MD-MINI-B01	For 0.2 ml tube (PCR Strip Tube), 32 wells, φ6.35 mm, depth 19 mm, L 71 x W 47 x H 32 mm
MD-MINI-B02	For 1.5 ml tube, 12 wells, φ10.8 mm, depth 28.5 mm, L 71 x W 47 x H 32 mm
MD-MINI-B03	For 15 ml tube, 6 wells, φ17.3 mm, depth 70 mm, L 71 x W 47 x H 75 mm
MD-MINI-B04	For 50 ml tube, 2 wells, φ29.2 mm, depth 72 mm, L 71 x W 47 x H 75 mm
MD-MINI-B05	For 0.5 ml tube, 12 wells, φ8.0 mm, depth 25 mm, L 71 x W 47 x H 32 mm
MD-MINI-B06	For 2.0 ml or 1.5 ml tube, 12 wells, φ11.0 mm, depth 30 mm, L 71 x W 47 x H 32 mm
MD-MINI-B07	For 1.5 ml tube, 12 wells, φ10.9 mm, depth 30 mm, L 71 x W 47 x H 32 mm
MS-BL95-E	Block Lifter, 95 mm length, with E-Type Retaining Rings
MD-MINI-LID	MD-MINI Lid, L 58.5 x W 83 x H 31.5 mm
MD-MINI-CAR-ADAPTER	Car Adapter for MD-MINI, 1.5 M

\*For more information please refer to 16-19\*



MD-MINI-LID



MD-MINI-CAR-ADAPTER



[www.majorsci.com](http://www.majorsci.com)

[info@majorsci.com](mailto:info@majorsci.com)

#### **US Office**

19959 Sea Gull Way  
Saratoga, CA 95070  
U.S.A.  
T/ +1-408-366-9866  
F/ +1-408-446-1107

#### **Taiwan Office**

No.37, Wuquan 5<sup>th</sup> Road,  
Wugu Dist., New Taipei City 24888  
Taiwan  
T/ +886-2-2298-1055  
F/ +886-2-2299-7871

#### **India Office**

No.12-13-104, St. No.3, Lane No.1,  
Tarnaka, Secunderabad - 500 017  
Andhra Pradesh, India  
T / +91- 40-27001586  
F / +91- 40-27001586