



SmartView Pro Imager System

NEW

SmartView Pro Imager System

UVCI-1000 series

The SmartView Pro Imager System provides two different models for you to choose. The SmartView Pro 1100 provides the basic feature and standard operation whereas the SmartView Pro 1200 provides the Wi-Fi feature compatibility with tablets(iPad,OS,Android,Windows).



UVCI-1100

UVCI-1200



UVCI-1200 LCD touch screen

Features

- High resolution 5.0 megapixel monochrome camera
- PC integration with real time Image
- Capture/Analysis software included
- Pull out UV Transilluminator for easy gel cutting
- Easy installation, ready to use right out of the box
- Pre-focused lens allow one touch image capture
- Variety of optional accessories available
- UV safety cut-off switch when door is open
- Wireless module for cable free environment (Wi-Fi version only)
- CE and FCC certification

5.0 MP Monochrome Camera



FCC CE
UVCI-1200



Wi-Fi connection for wire-free lab environment

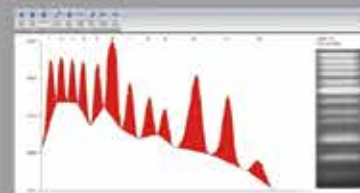
MS 1D Analysis Software(Cat. No. MBE-IMG-SW)

PC Version

Load image



Quantify



Define region



Analysis



iPad Version



Specifications

Product name	SmartView Pro 1100 (Standard version)	SmartView Pro 1200 (Wi-Fi version)
Cat. No.	UVCI-1100	UVCI-1200
UV Light	312 (302) nm	
Camera	5.0 MP (2592 x 1944) ,10 bit scientific grade sensor	
Lens (Camera)	6 mm, F1.2	
Filter (Camera)	Optical EtBr filter (standard); optional filter available	
Image Storage	PC	Portable device (iOS or android) and PC
Connection	USB to PC	Wi-Fi to portable device and PC
Software Support	Window 8 / 7 (64 & 32 bit) / XP / Vista	Windows 8 / 7/(64 & 32 bit)/XP/Vista, Tablets
Cabinet	Pull out, sliding transilluminator	
Field Of View	8.26" x 10.24" (210 x 260 mm), H: 3.46" (88 mm)	
Unit Dimensions	(W x D x H) 16.1" x 15.9" x 22.4" (410 x 405 x 570 mm)	
Unit Weight	Approx. 54.0 lbs. (24.5 kg)	
Display	LED	LCD
Viewing Window	For gel observation	
Window Filter	560 nm amber filter (standard)	
Light	White light (standard)	
Optional Accessory	White light table (power built-in) 470 nm Blue light (power built-in)	
Safety	CE, FCC	
USB Port	for PC connection	For maintenance purpose only
Wi-Fi Format	N / A	n, g

* iPad and PC not included

Ordering Information

Cat. No.	Product Description
UVCI-1100	SmartView Pro 1100 Imager System, standard version
UVCI-1200	SmartView Pro 1200 Imager System, wifi version
UVCI-1101	SmartView Pro 1100 Imager System, standard version, high UV performance
UVCI-1201	SmartView Pro 1200 Imager System, wifi version, high UV performance

Accessories

Cat. No.	Product Description
UVCI-1000-WL	White light table for SmartView Pro Imager System, for 1000 & 2000 series
UVCI-1000-BL	Blue light module for SmartView Pro Imager System, for 1000 & 2000 series
UVCI-1000-EB	Optical EtBr filter (620 nm) for SmartView Pro & Simple Imager System
UVCI-1000-SG	Optical SYBR Green filter (520 nm) for SmartView Pro & Simple Imager System
MBE-IMG-F3	SmartView amber filter, 560 nm
MBE-IMG-F4	SmartView amber filter, 580 nm
UVCI-1003	SmartView Pro UV Protection Shield, for 1000 & 2000 series
UVCI-1004	SmartView Pro Lens filter Stand, for 1000 & 2000 series
MBE-G-Y1	Amber filter Viewing Glasses (optional)



UVCI-1000-WL



UVCI-1000-BL



UVCI-1000-EB
included in the
standard



UVCI-1000-SG



MBE-IMG-F3



MBE-IMG-F4



UVCI-1003



UVCI-1004



MBE-G-Y1



Sliding
transilluminator



Easy installed
by magnetic
design



Easily gel
cutting design
with UV



Up to 4 filters



easily placed
by magnetic
near camera



Optional
Blue Light
device



www.majorsci.com

info@majorsci.com

US Office

19959 Sea Gull Way
Saratoga, CA 95070
U.S.A.
T/ +1-408-366-9866
F/ +1-408-446-1107

Taiwan Office

No.37, Wuquan 5th Road,
Wugu Dist., New Taipei City 24888
Taiwan
T/ +886-2-2298-1055
F/ +886-2-2299-7871

India Office

No.12-13-104, St. No.3, Lane No.1,
Tarnaka, Secunderabad - 500 017
Andhra Pradesh, India
T / +91- 40-27001586
F / +91- 40-27001586