

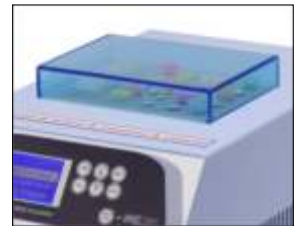
# Cool-Hotter Dry Bath Incubator

Two modes of Cool-Hotter Dry Bath Incubators are available with different temperature performance, along with a competitive range of interchangeable block. Both modules are designed for a variety of applications including ligation, storage, restriction digests, denaturing DNA, BUN, melting agar, coagulation studies, hybridization and Hot Start thermo-cycled reaction. The fully programmability contains Constant Operation, Programmable Mode, and Annealing Mode. A 2.6" LCD screen, showing all the running / setting conditions. Microprocessor controller offers easy temperature selection, rapid heat up and cooling down with an excellent stability. The temperature can be set in 0.1°C increments from -10°C to 100°C. Optional Function Control software is available for the control and real time data recording through a PC for specified user requirement.

## Features

- >Microprocessor control with digital performance for precise, accurate control
- >Wide temperature control range & great temperature controlled performance
- >Rapid temperature increasing rate
- >LCD screen shows all the parameters during run
- >User temperature calibration
- >Used as a water bath
- >Function Control software available

## Cover included

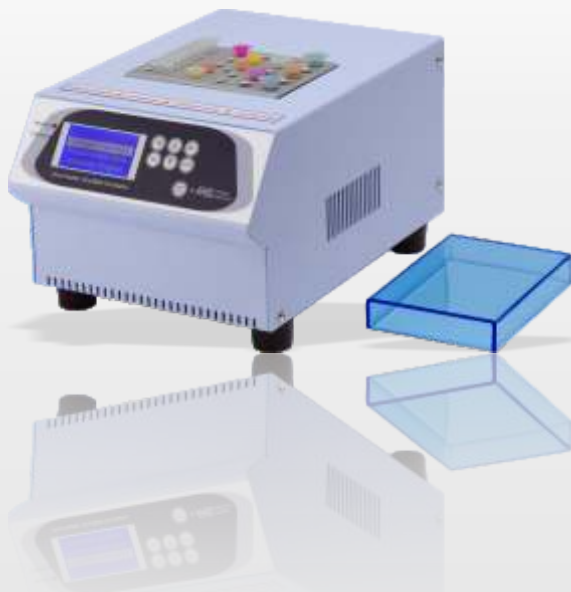


## LCD display



CE

Cat. No. :MC-01N



CE

Cat. No. :MC-01S



| Specification                  | MC-01N   | MC-01S          |
|--------------------------------|--|-----------------|
| Chamber Dimension (W x L x H)  | 125 x 90 x 50mm  | 125 x 90 x 30mm |
| Display                        | 2.6" LCD   |                 |
| Heating Power                  | 400W   |                 |
| Unit Dimension (W x L x H)     | 200 x 295 x 140mm  |                 |
| Controller                     | Digital microprocessor controller  |                 |
| Heating Chamber                | Water-proof aluminum   |                 |
| Temperature Control Range      | -10°C ~ 100°C in the environment of 25°C   |                 |
| Temperature Increment          | 0.1°C  |                 |
| Temperature Uniformity at 37°C | ± 0.2°C  |                 |
| Temperature Accuracy at 37°C   | ± 0.2°C  |                 |
| Temperature Calibration        | Yes  |                 |
| Operation Mode                 | Constant operation: constant temperature (-10~100°C); Timer: 1~9999 mins<br>Program operation: 1~4 steps and up to 9 cycles; Timer: 1~9999 mins<br>Annealing program |                 |
| Safety Device                  | Leakage proof for heating chamber  |                 |
| Operating Temperature          | Ambient to 40°C  |                 |
| Special Feature                | Used as water bath incubator   |                 |
| Block Material                 | Aluminum alloy   |                 |
| Block Type                     | Standard and customized type are available   |                 |
| Data Log                       | RS 232   |                 |
| Rated Voltage                  | 110V / 220V selectable   |                 |
| Weight                         | approx. 8kg  |                 |



#### Ordering Information

|                |   |
|----------------|---|
| MC-01N-110/220 | Cool-Hotter Dry Bath Incubator; without block               |
| MC-01S-110/220 | Superior Cool-Hotter Dry Bath Incubator; without block      |
| MC-RS232       | RS 232 cable  |
| MC-DLSW        | Data Logging software package                               |
| MC-PCSW        | Function Control software package                           |
| MC-DLSW-R      | Data Logging software package, including a RS 232 cable     |
| MC-PCSW-R      | Function Control software package, including a RS 232 cable |

# Cool- Hotter Dry Bath Incubator

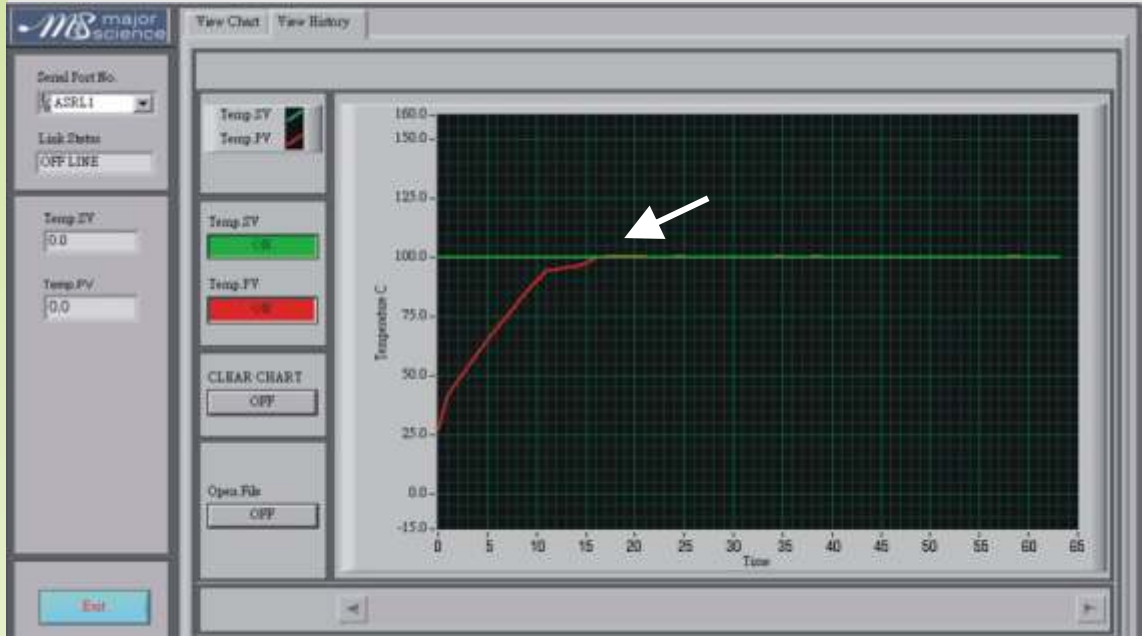
Cat. No. :MC-01N



- Temp. Set Value: 100°C
- Initial Temp. Value: 25°C

Block Mode: MC-B0.2+0.5

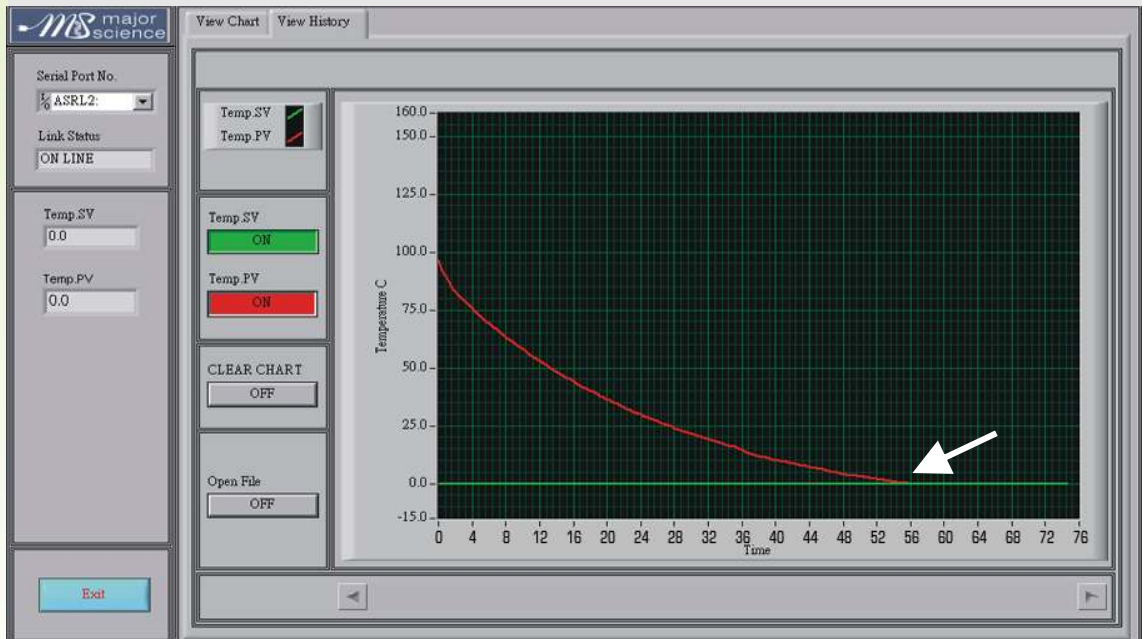
Process Time: approx. 17mins



- Temp. Set Value: 0°C
- Initial Temp. Value: 100°C

Block Mode: MC-B0.2+0.5

Process Time: approx. 62mins



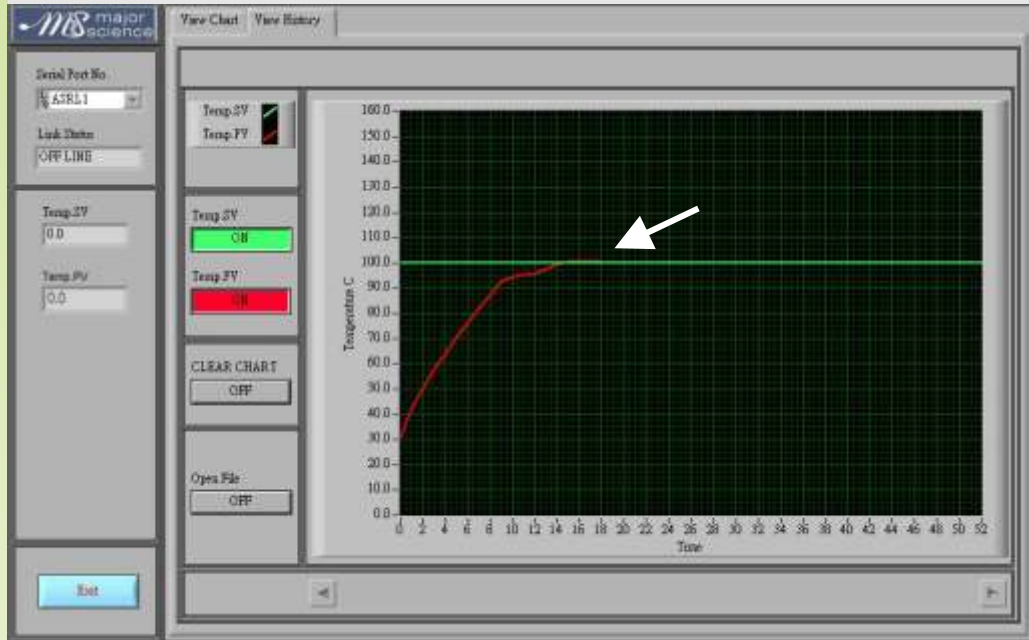
# Superior Cool- Hotter Dry Bath Incubator

Cat. No. :MC-01S



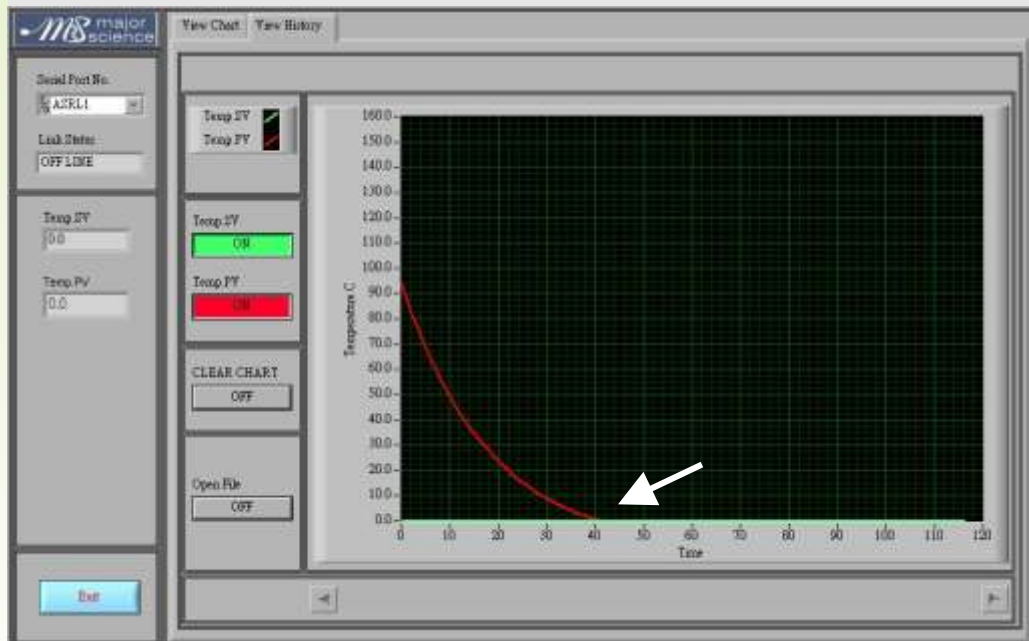
- Temp. Set Value: 100°C
- Initial Temp. Value: 28°C

Block Mode: MC-BS0.2+0.5  
Process Time: approx. 13mins



- Temp. Set Value: 0°C
- Initial Temp. Value: 100°C

Block Mode: MC-BS0.2+0.5  
Process Time: approx. 36mins




# Cool-Hotter Dry Bath Blocks

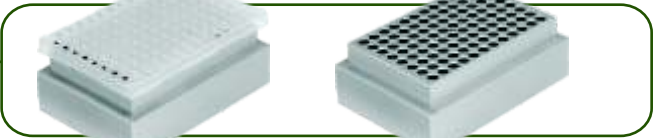
Cool-Hotter Dry Bath Blocks are designed for Cool-Hotter Dry Bath Incubator. The precision machined aluminum alloy blocks, which are suitable for microplate and different test tubes, range from 0.2ml tube to 50ml centrifuge tube, deliver efficient heating and cooling performance. In addition to the standard blocks, customized blocks are also available to widen application of Cool-Hotter Dry Bath Incubator.

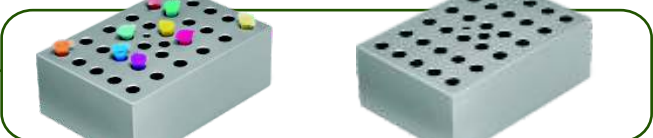
Superior MC Blocks are designed for Superior Cool-Hotter Dry Bath Incubator, to provide superior heating and cooling speed. Two standard block modes and customized blocks are available.

| Specification         | MC Block                       | Superior MC Block |
|-----------------------|--------------------------------|-------------------|
| Dimension (W x L x H) | 90 x 127 x 50mm                | 90 x 127 x 30mm   |
| Block Material        | Aluminum alloy                 |                   |
| Block Lifter Well     | Yes                            |                   |
| Thermometer Well      | Yes (except microplate blocks) |                   |

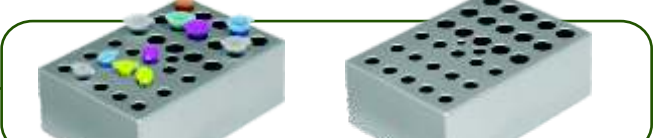
- MC-MP01**  
For Microplate; Titerplate (Plain Block)

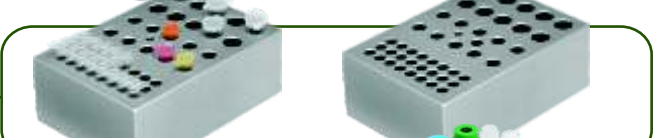

- MC-MP02**  
For 96 wells Deep Microplate or PCR plate

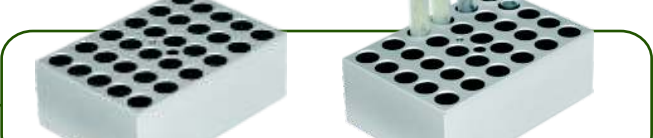

- MC-B0.5**  
For 0.5ml, 30 wells


- MC-B1.5**  
For 1.5 or 2.0ml, 30 wells


- MC-B0.5+1.5**  
Combination: 1.5ml or 2.0 ml tube, 15 wells and 0.5ml tube, 15 wells (on the same side)


- MC-B0.2+0.5+1.5**  
Combination: 0.2ml tube (or Strip tube for 8 wells), 24 wells; 1.5ml or 2.0ml tube, 10 wells and 0.5ml tube, 10 wells (on the same side)


- MC-B13**  
Well size 13mm, 30 wells



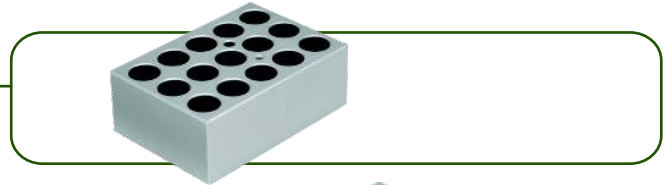
**MC-B17**

For 15 ml centrifuge tube, 15 wells



**MC-B20**

Well size 20mm, 15 wells



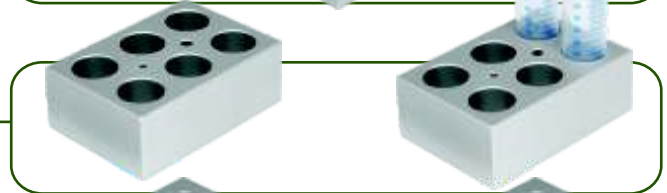
**MC-B25**

Well size 25mm, 6 wells



**MC-B29**

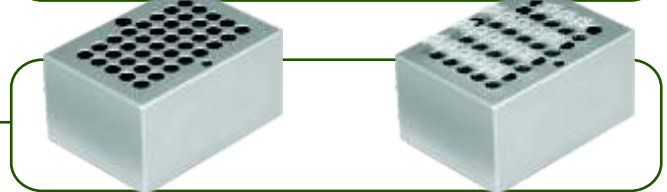
For 50ml centrifuge tube, 6 wells



**MC-B0.2H**

(1/2) Half Block for 0.2ml tube, 40 wells ( or 0.2ml PCR Strip tube for 8 wells x 5)

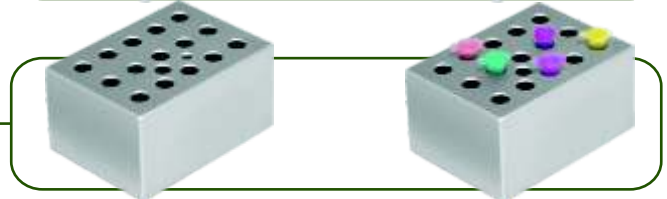
One Cool-Hotter Dry Bath Incubator can insert 2 ea of Half Block



**MC-B0.5H**

(1/2) Half Block for 0.5ml tube, 15 wells

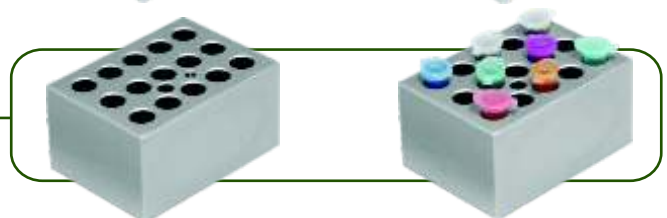
One Cool-Hotter Dry Bath Incubator can insert 2 ea of Half Block



**MC-B1.5H**

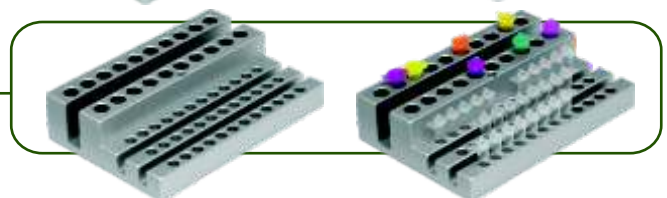
(1/2) Half Block for 1.5 or 2ml tube, 15 wells

One Cool-Hotter Dry Bath Incubator can insert 2 ea of Half Block



**MC-BS0.2+0.5**

Combination: 0.2ml tube, 36 wells; 0.5ml , 20 wells



**MC-BS0.5+1.5**

Combination: 0.5ml tube, 18 wells; 1.5ml , 14 wells

